



Digital Advanced Sensors

Sensing Control Leading | Sensor Specialized Company

Smart Inclinometer System

SI-200

Excellent linearity · repeatability
and accuracy.

High-strength two-core stainless steel cable
without disconnection

Automatic displacement calculating,
data plotting and chart building.

Anti-shock · anti-corrosion connector

Convenient operating with
Bluetooth and Android OS.

Smart Inclinometer System

DAS
Digital Advanced Sensors

SI-200

Sensing Control Leading
Sensor Specialized

An inclinometer system is a survey instrument to measure displacement from inclinometer casing installed permanently in a borehole that passes through a zone that expected movement or already has such as a tunnel, a dam, a dike or many other kinds of construction sites.



● System Summary

An inclinometer system SI-200 includes Inclinometer Probe, Data Cable, Cable Drum, End-Cap, Data Reader and accessories. Data from inclinometer probe is transmitted to the reader through the Cable Drum by wireless Bluetooth.

Connect the probe and cable, Bluetooth pairing the Cable Drum and the reader to survey. Survey with manual surveying order by the reader or using hands-free mode. Recorded data from surveys can be exported to external USB storage, saved to internal storage or sent by e-mail.

Data file which exported by the app can be opened in a spreadsheet (such as MS Excel). Any calculating with factor is unnecessary for data. Data in data file is already calculated automatically to distance displacement.

● Applicable for

- Stability of slopes, embankments and dams.
- Deformation of sheet piles, diaphragm walls.
- Movement of bridge piers and abutments.
- All angular, distance displacement of all of constructions and civil engineering.

● Features

- Inclinometer probe based on high precise MEMS inclinometer as Biaxial, -30 to +30 degrees maximum and 0.001 degree (=0.0087mm) resolution.
- Patented very strong, durable, thin and lightweight data cable consists of 1-core stainless steel wire cable (with braiding shields) to prevents breaking or any damages from frequent pulling and bending.
- Whole-new-designed connection between inclinometer probe and data cable provides convenient way to assemble the probe and cable and prevents any damages of pin terminals by corrosions.
- Touch screen interface with Android OS on the data reader provides convenient and efficient experience to operate the surveying system.
- The inclinometer system SI-200 is easy to handle due to its light weight and simple design. And is marked with a laser-engraved label for easy identification of the current depth.
- Compatible with most common sizes of casing, End-cap aligns cable graduations precisely at the top of the casing and eliminating the potential for depth errors.

Smart Inclinometer System

SI-200

Sensing Control Leading
Sensor Specialized

● Inclinometer Probe

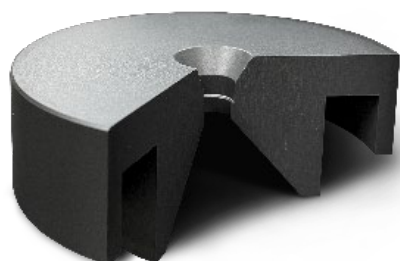
Item	Specifications
Wheel Base	500mm
Inclinometer	2axis MEMS
Range	±30°
Resolution	0.001°
Repeatability	±0.002°
Operating Temp.	-20 ~ +70°C
Material	Stainless Steel

● Cable Drum

Item	Specifications
Function	BLE, Power Saving, Waterproof
Switches&Buttons	2ea (Power, Bluetooth Reset)
Led Indicator	3ea (Power, Charging, Bluetooth)
Connectors	1ea (Recharging and debugging)
Durations	up to 25 hours continuously
Recharger	+19VDC ; 2A / 100-260VAC 60Hz

● End-cap

- For : For accurate measurement, measure by mounting the cable label on the groove on the top of the end-cap.
- Dimensions : Internal diameter of 50-60mm
- Material : Black painted stainless steel



● Cable



	SI-200	Old Product
Wire Material	Stainless Steel	Copper
Inner Wires	2+Paper Shield	6 + Foil Shield
Wire Strength	Very Strong	Weak
Thickness	Ø6.5	Ø10
Weight	Light	Heavy
Outer Covering	Polyurethane	
Graduation	every 0.5m, Laser marked	
Length	50m / 100m	

● Data Reader & App

- OS : Android OS 5.0+
- Features : Touch screen interface, Wireless Bluetooth, Voice guidance, Hands-free mode, Plotting & viewing data, Data exporting.
- Data Limit : Unlimited (depends on storage space of data reader)
- Basic Offer : 7in Tablet PC (Korean product)
- The application is installed on the tablet PC supplied basically and it also can be downloaded on DAS website <http://das-co.com/>.
- You can access Das' website through the QR code on the label attached to the Cable Drum.

Smart Inclinometer System

SI-200

Sensing Control Leading
Sensor Specialized

● Wireless Button

By connecting to the data reader via Bluetooth, you can issue measurement commands by pressing a button instead of touching the TAP button during measurement.

Devices other than the default reader may conflict with other applications on the mobile device, and in this case, some applications (music, Google search applications, etc.) that use the play button of the hands-free earphones must be disabled.



● Notes

- 1) 12 months warranty is provided after released. Warranty provided only in case of using for designed purpose correctly.
- 2) The inclinometer system is a very precise measuring instrument. Before operating the device, be sure to familiarize yourself with how to use the user's manual before operating it, and be careful in handling by referring to the user's manual.
- 3) The supplied tablet PC is a service item and is not manufactured by our company. We are not responsible for defects or failures, so please contact the manufacturer of the device for repair, warranty, and technical support.
- 4) Specifications, design and components can be changed without prior notice to improve its performances.

● Other Accessories (Basic offer)

- Backpack : for carrying Cable Drum and other accessories.



DAS Co., Ltd.

128, Bibong-ro, Bibong-myeon, Hwaseong-si,
Gyeonggi-do, (18284) Republic of Korea

Tel. +82 31 356 3541

e-Mail. sales@das-co.com

Web. <http://das-co.com>